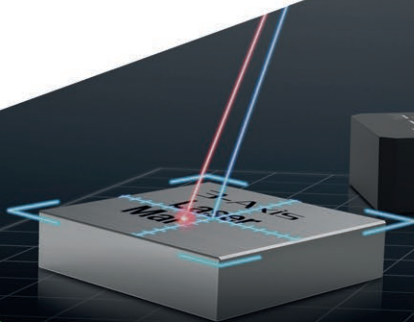




ROBOT-SERVICE



MARKING STATIONS

product catalog

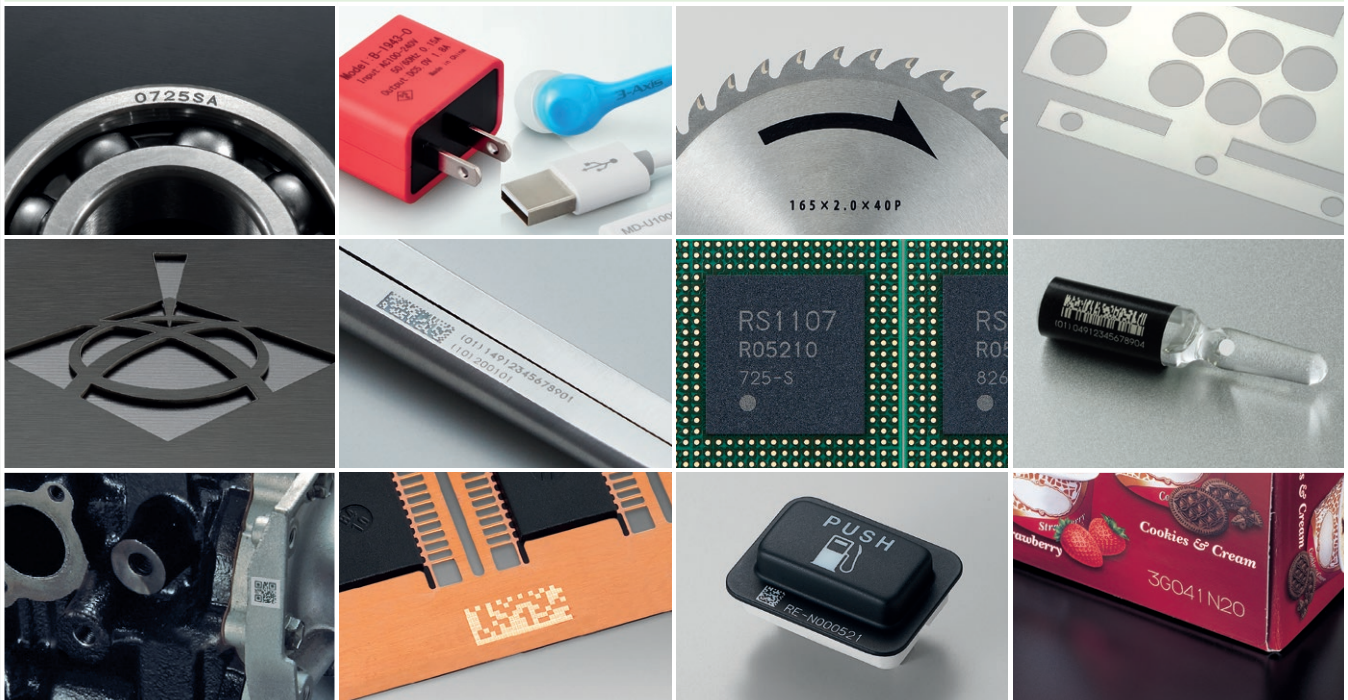
MARKING OPTIONS

KEYENCE

3 AXIS LASER MARKING

FIBER	UV	HIBRID	CO2
<ul style="list-style-type: none"> • Metal, plastic and ceramic marking • Excellent for metal marking applications 	<ul style="list-style-type: none"> • Damage free, high-contrast marking • Robust solution for a variety of materials • Built-in camera to read 2D codes • Autofocus function 	<ul style="list-style-type: none"> • Metal, plastic, film, foil, and ceramic marking • The most versatile general purpose marking solution • Built-in camera to read 2D codes • Autofocus function 	<ul style="list-style-type: none"> • Paper, plastic, glass and ceramic marking • Processing of special materials, such as thin films or glass

Application examples of laser markers



About the laser sources

Since 1974, KEYENCE has steadily grown and innovated to become a world leader in the development of automation and quality assurance solutions. Their product portfolio consists of laser markers, sensors, measuring instruments, camera systems and digital microscopes.

Today, KEYENCE serves more than 200,000 customers worldwide in nearly 100 countries, where its name is synonymous with innovation and excellence.

KEYENCE has been an innovative leader in the laser marking industry since the early 1990's. Our high speed, precision processing capabilities have evolved to include the first 3-Axis lasers and unrivalled marking quality among Fibre, YVO4 and CO2 laser marking systems. The newest laser marking systems from KEYENCE are built upon years of experience and hands on application knowledge. KEYENCE is committed to introducing new cutting-edge products that go beyond the expectations of its customers.



ROBOT-SERVICE



ABOUT

Robot-Service Ltd. started its business in the world of industrial automation in 2011. Over the years, our colleagues have gained a lot of experience in creating reliable machines and in finding cost-effective solutions. Our main activities are the construction of special machines and robotic cells. Along with these two main groups, we have mastered a wide variety of technologies, and we are efficiently utilizing our experience in each of our projects. Our services also cover the individual machine-building sub-processes, such as consulting, designing, training etc.

We can provide the following services:

- > mechanical design
- > electrical design
- > robot and PLC programming
- > technical support
- > specification writing
- > education
- > service, maintenance

TECHNOLOGIES

Measuring, testing

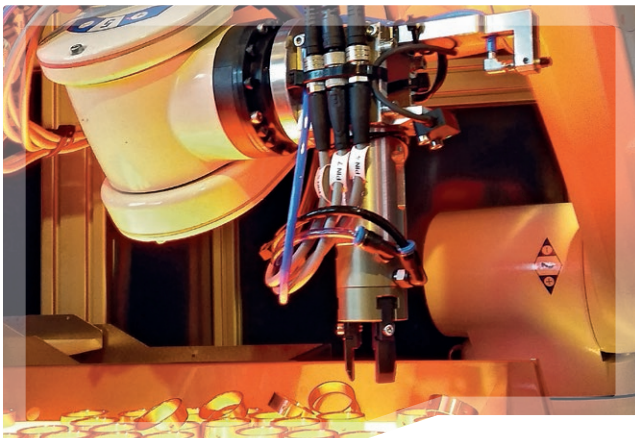
Today, measuring machines are essential for mass production. Most of our special machines and robot cells contain product quality validation systems. Let it be visual inspection with camera, laser, scanner or tactile measurement or even pressure test, we will find the most suitable solutions for you.

Assembly

Assembly machines belong to one of the most complex machine categories. We have already built special machines for a wide variety of operations. It is common for assembly machines to be supplemented with measuring technology in order to guarantee the most professional production possible.

Marking technology

Whenever the product needs to be identified, marking technology is essential. In some cases we must build a special machine for the marking task, however there are also cases when the marking unit is part of a robot cell.



Machining

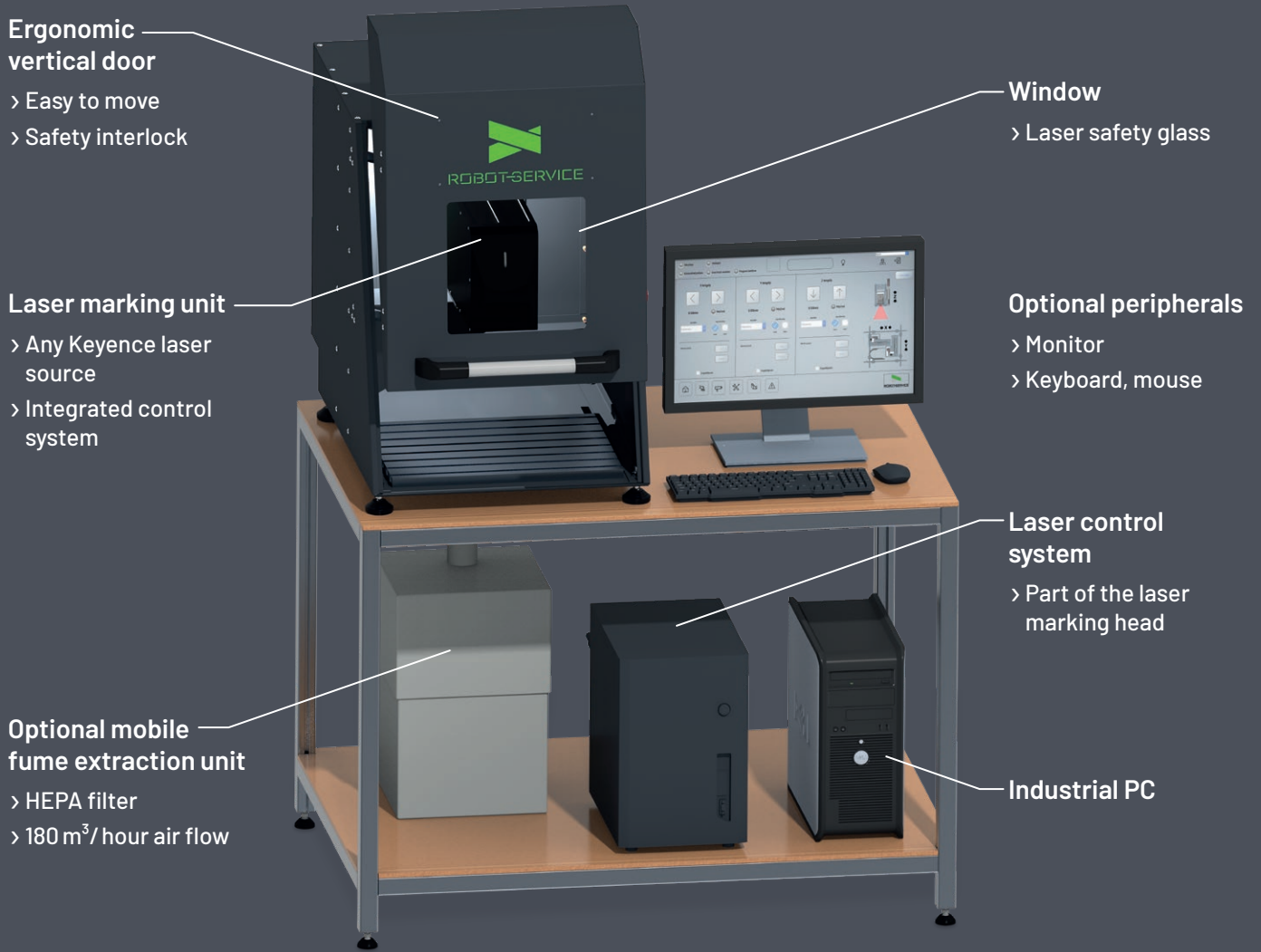
Our company can also make the machining tasks in serial production more efficient with its dedicated special machines and robot cells.

Our line-up includes drilling, tapping, milling, and deburring machines. We can integrate emulsion or microspraying systems where the technology makes it necessary. Chip formation is not a problem because we can integrate automatic chip removing systems, as well.

Special technologies

We can provide solutions for special technologies that are not fit into the classes above, such as plasma cleaning, gluing, pasting, painting etc.

COMPACT DESKTOP MARKER STATION

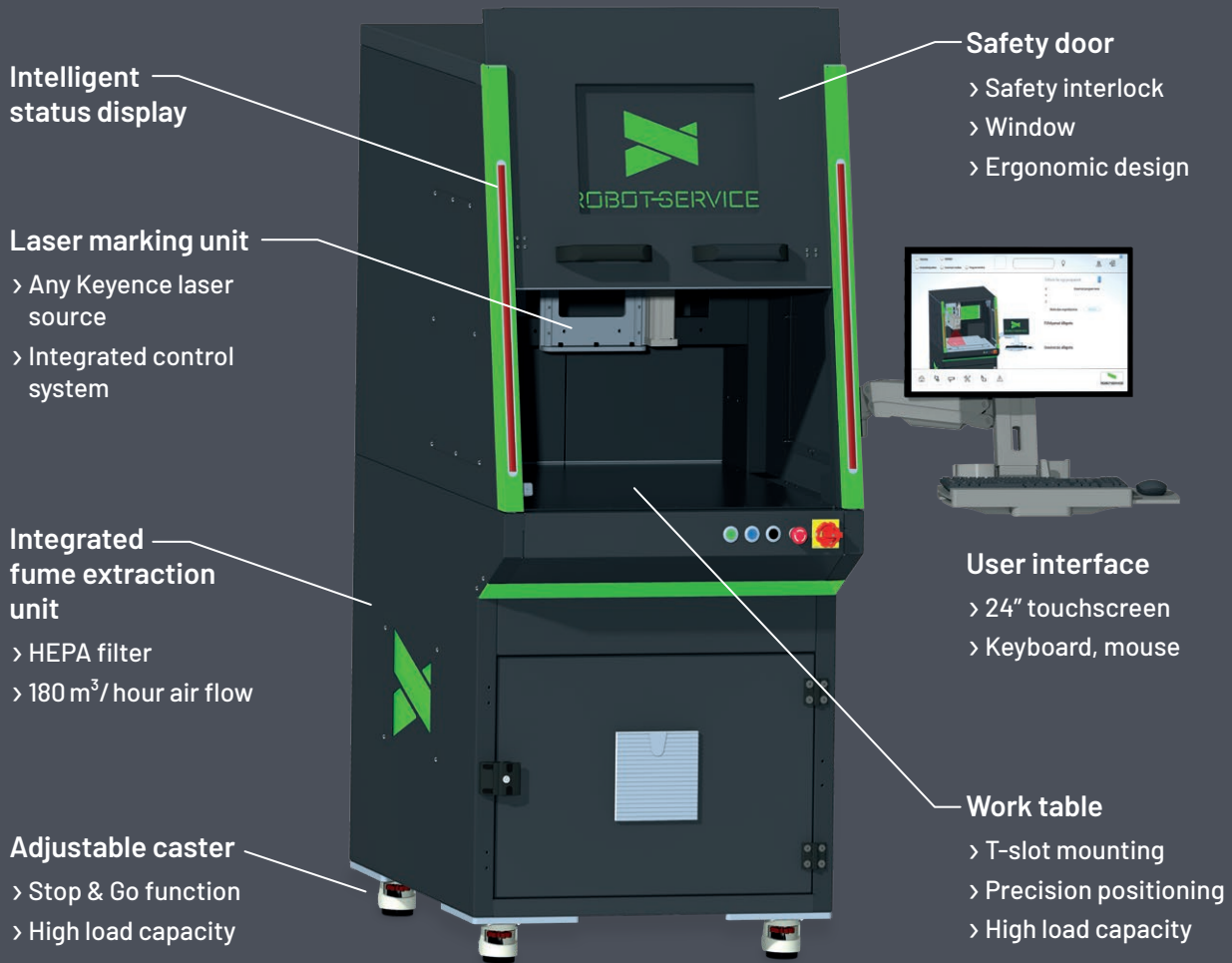


Size	600×750×900 mm (L×W×H)
Marking area	max. 330×330×42 mm (L×W×H)
Table size	500×400 mm
Door opening	Manual
Window size	290×290 mm
Fume extractor connection	∅ 50
Electrical supply	230 V, 16 A
Weight	~50 kg
Cover	Paint coated sheet metal
Fume extraction unit	Independent

STANDARD MARKING STATION

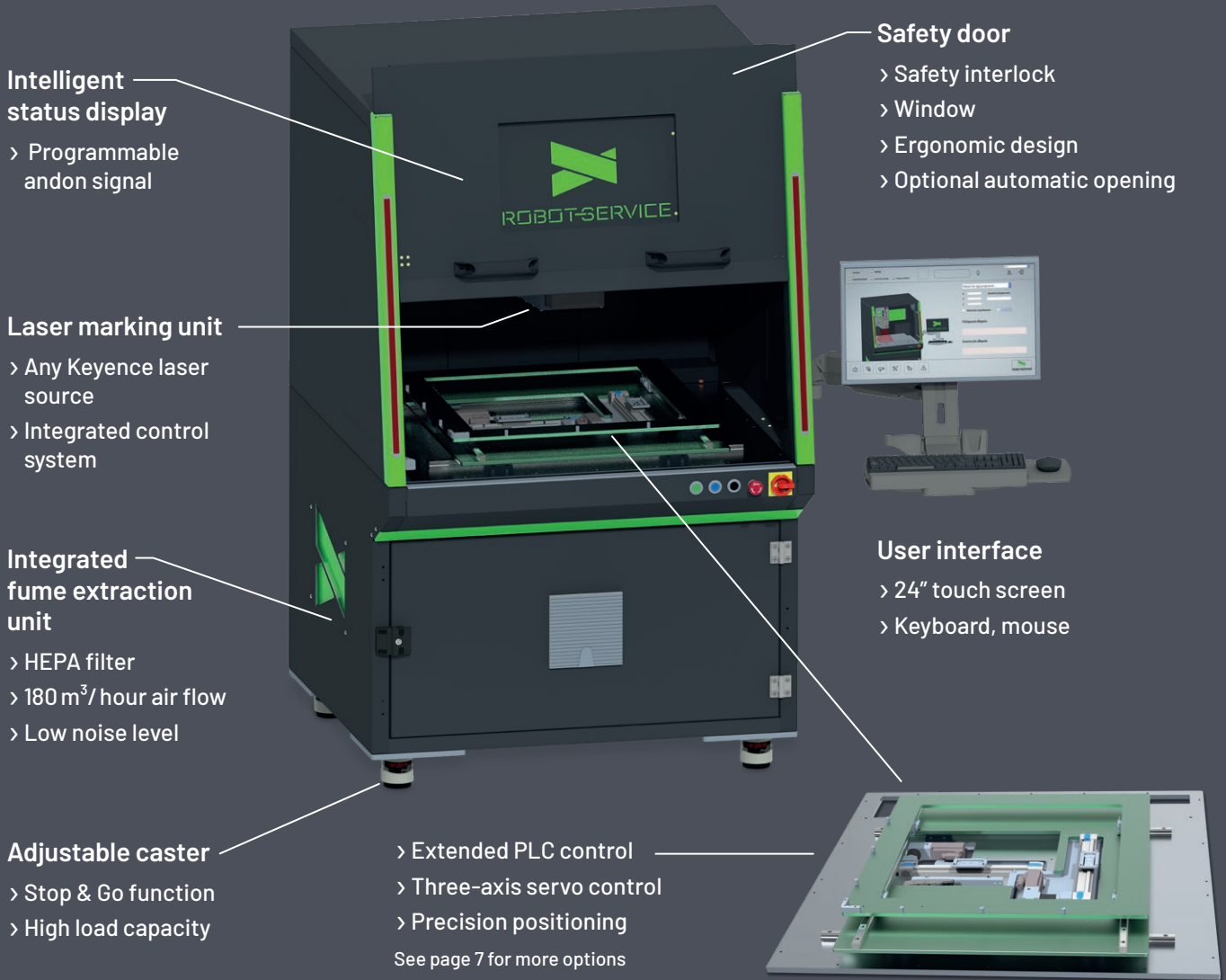


ROBOT-SERVICE



Size	900×1200×2000 mm (L×W×H)
Marking area	max. 330×330×42 mm (L×W×H)
Table size	600×400 mm
Door opening	Manual
Window size	290×290 mm
Fume extractor connection	∅ 50
Electrical supply	230 V, 16 A
Weight	~400 kg
Cover	Paint coated sheet metal
Fume extraction unit	Integrated

INTELLIGENT MARKING STATION INDUSTRY 4.0 COMPATIBLE



Size	Variable as needed
Marking area	max. 330×330×42 mm (L×W×H)
Table size	Variable as needed
Door opening	Manual / automatic
Window size	290×290 mm
Fume extractor connection	∅ 50
Electrical supply	230 V, 16 A
Weight	Variable depending on size requirements
Cover	Paint coated sheet metal
Fume extraction unit	Integrated

- Additional functions**
- > Product identification
 - > Quality control
 - > Camera position compensation
 - > Code reading
 - > Advanced autofocus option



ROBOT-SERVICE

We do not just make machines but make a professional product.

Additional features



TURNTABLE DESIGN

- › Easy to use
- › Two-position rotary table
- › Reduced cycle time
- › Two-handed start

COLLABORATIVE MACHINE TENDING

- › Universal solution
- › Fully automatic process
- › Integrated AGV dock

In collaborative solutions humans and robots work side by side, the latter taking the hard physical work off the shoulders of human workers. A collaborative robot arm also requires collaborative gripping units, which we can help you to select or to design. Material flow can be solved using AGV (Automated Guided Vehicle) technology.



INTEGRATION INTO PRODUCTION LINES

- › Conveyor feedthrough
- › Laser light protection
- › High efficiency
- › Fully automatic process



ROBOT-SERVICE

1165 Budapest, Margit u. 114., 44/3

+36 70 907 1062

info@robot-service.hu

www.robot-service.hu

